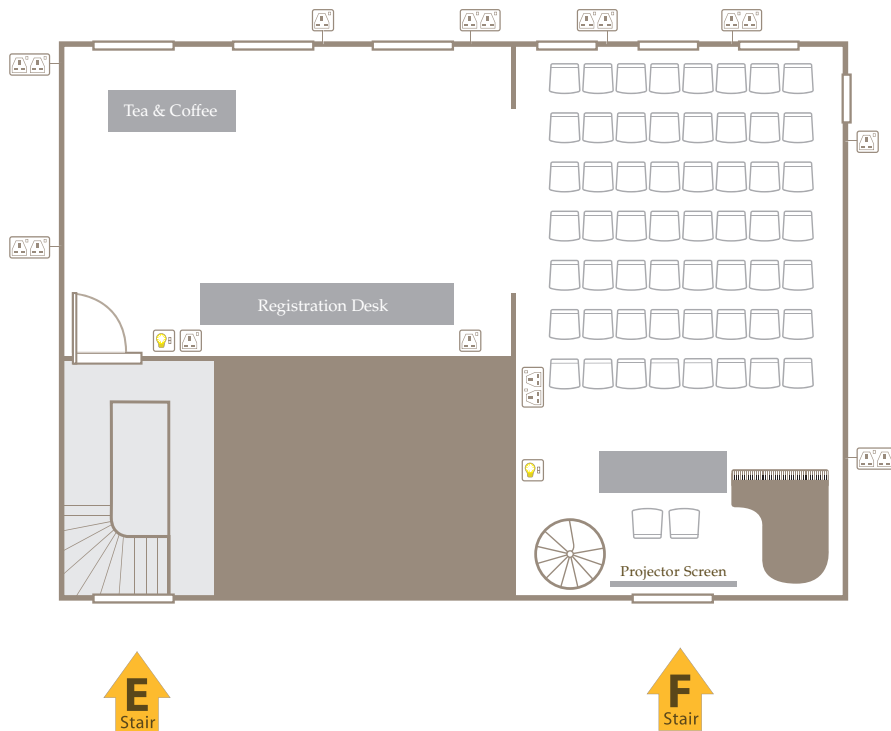


The Music Room and Annex

DOWNING COLLEGE CAMBRIDGE

(Fig. 1) *West Range First Floor*

Please note the West Lodge and Maitland rooms on the first floor are also available for additional space



DIMENSIONS

Music Room 8m x 5.5m **44m²**

Annex 5.5m x 11.5m **60.5m²**

Combined **104.5m²**

CAPACITY

Theatre and Registration (Fig. 1) **56**

Exam **25**

Classroom **40**

EQUIPMENT

Data projector and Screen, OHP, Mobile PA system, Video and TV, Flip charts

A stunning combination of two adjoining rooms which can be used as one combined space or as separate rooms ideal venue for Boardroom style meetings or presentations, breakout rooms and refreshments.

VIEW FROM THE MUSIC ROOM LOOKING INTO THE ANNEX



BOOKINGS

For bookings, please contact the Conference office on **01223 334 860**

FOR A MAP SHOWING THE ROOM'S LOCATION IN THE COLLEGE & ALTERNATIVE ROOM LAYOUTS PLEASE SEE OVERLEAF

The Music Room and Annex

DOWNING COLLEGE CAMBRIDGE



FINDING THE MUSIC ROOM AND ANNEX

All visitors are kindly requested to report to the Porters' Lodge. This can be found on the left hand side as you walk through the main college gates on Regent Street.



PARKING

Once inside the main gate, turn right, pass through the barrier and follow car park along to the 'Conference Parking Area'.

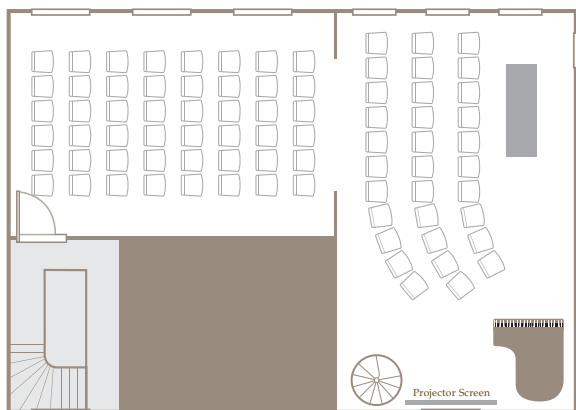


FIRE ASSEMBLY POINT

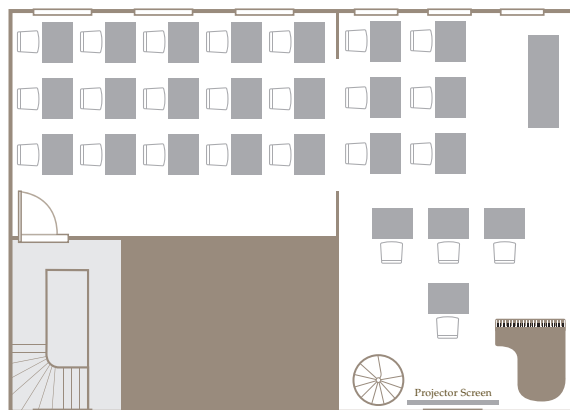
In the unlikely event of a fire, please note the Fire Assembly Point for the Music Room and Annex is on the grassed area at the front of the West Range.



Lecture Theatre **80**



Exam **25**



Classroom **40**



Standing **100**

