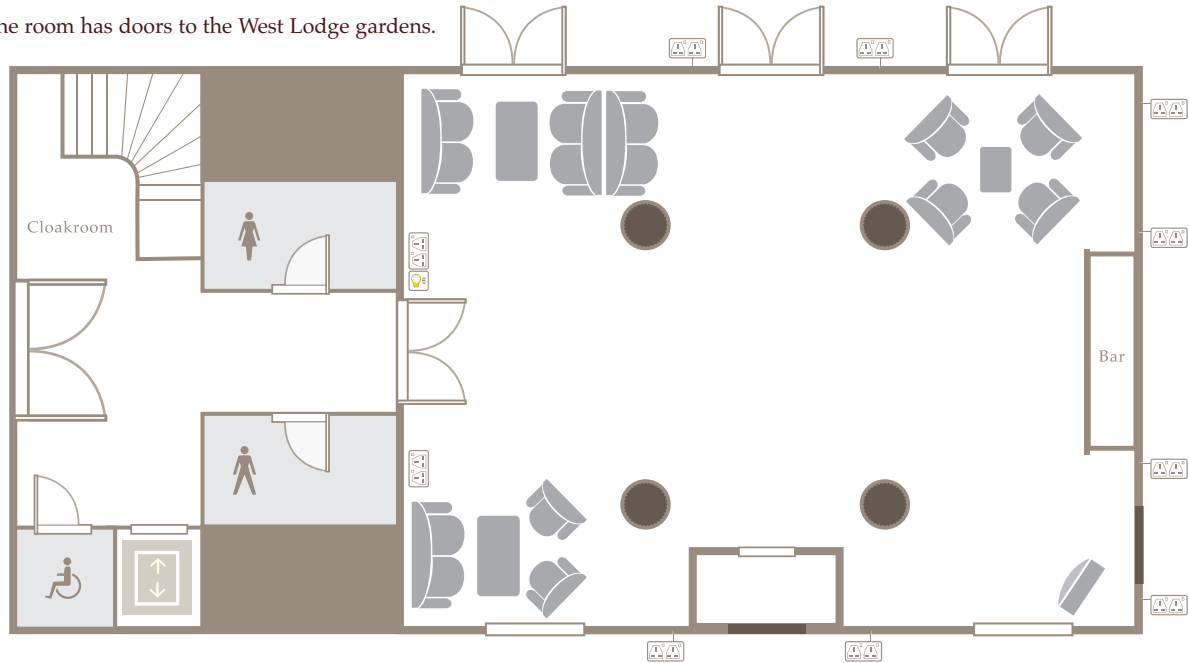


The Howard Building Ground Floor

DOWNING COLLEGE CAMBRIDGE

(Fig. 1) Howard Building Ground Floor

The room has doors to the West Lodge gardens.



DIMENSIONS

8m x 6m **48m²**

CAPACITY

Drinks and reception (Fig. 1) **130** Classroom **20** Buffet **100**

EQUIPMENT Data projector and screen, Flip chart, TV

A reception area with a bar, suitable for registrations, receptions, exhibitions, coffee/tea breaks and buffets. It is linked by stairs and accessible lift to the 160 person, fully equipped lecture theatre on the second floor.

SHOWS THE VIEW OF THE BAR FROM THE WINDOWS
OVERLOOKING THE WEST LODGE GARDEN



BOOKINGS

For bookings, please contact the Conference office on **01223 334 860**

FOR A MAP SHOWING THE ROOM'S LOCATION IN THE COLLEGE & ALTERNATIVE ROOM LAYOUTS PLEASE SEE OVERLEAF

The Howard Building Ground Floor

DOWNING COLLEGE CAMBRIDGE

▲ FINDING THE HOWARD BUILDING

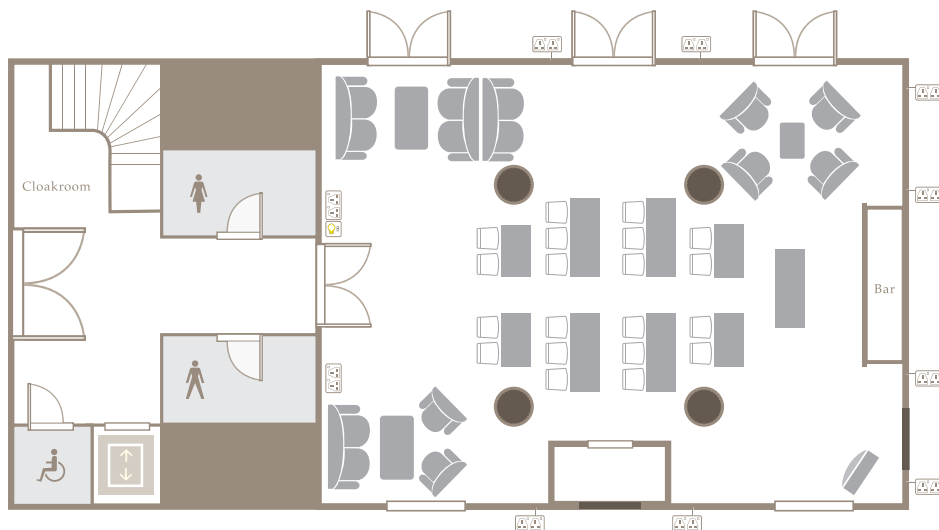
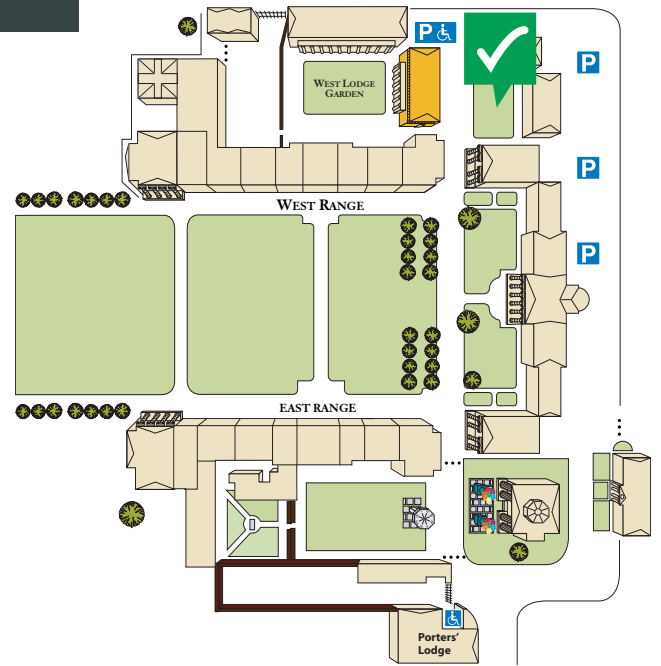
All visitors are kindly requested to report to the Porters' Lodge. This can be found on the left hand side as you walk through the main college gates on Regent Street.

P PARKING

Once inside the main gate, turn right, pass through the barrier and follow car park along to the 'Conference Parking Area'.

✓ FIRE ASSEMBLY POINT

In the unlikely event of a fire, please note the Fire Assembly point for the Howard Building is on the grassed area at the front of the building.



Classroom 20

Buffet 100

