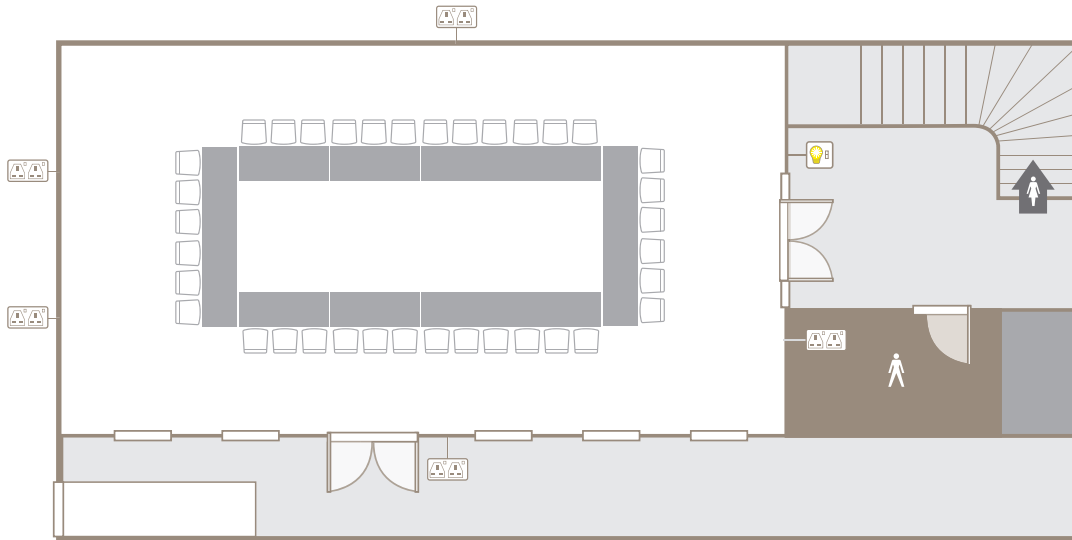




The Butterfield Building

DOWNING COLLEGE CAMBRIDGE

(Fig. 1) Butterfield Room



The Butterfield Room and Bar on the ground floor can be hired in conjunction for parties and special events.

DIMENSIONS

The Butterfield Room 13m x 7m **91m²** Bar 13m x 7m **91m²** Combined **182m²**

CAPACITY

Boardroom (Fig. 1) **36** Theatre Delegates **72** Classroom **72**

EQUIPMENT Data projector, OHP, Pads and pens are available on request

Situated below the Butterfield bar via stairwell, The Butterfield Room is the perfect accompanying recreational room for workshops, parties and evening relaxation events.

VIEW FROM THE FRONT OF THE BUTTERFIELD BUILDING



BOOKINGS

For bookings, please contact the Conference office on **01223 334 860**

FOR A MAP SHOWING THE ROOM'S LOCATION IN THE COLLEGE & ALTERNATIVE ROOM LAYOUTS PLEASE SEE OVERLEAF

The Butterfield Building

DOWNING COLLEGE CAMBRIDGE

▲ FINDING THE BUTTERFIELD BUILDING

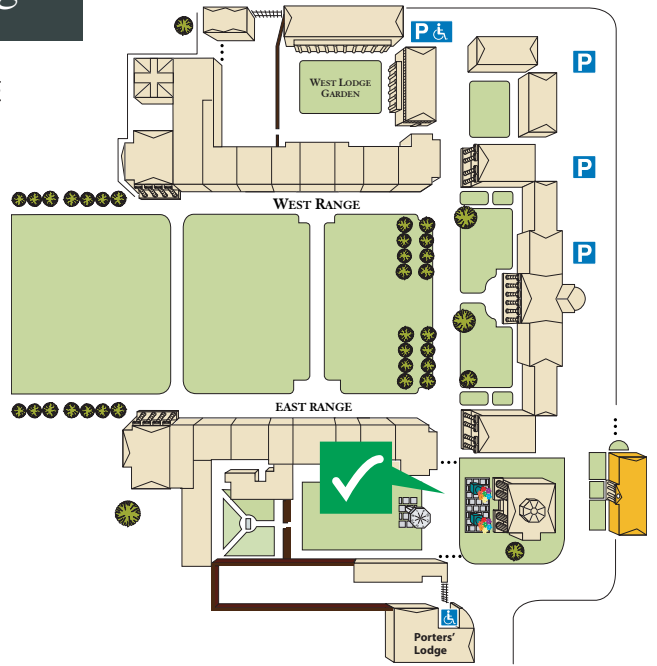
All visitors are kindly requested to report to the Porters' Lodge. This can be found on the left hand side as you walk through the main college gates on Regent Street.

P PARKING

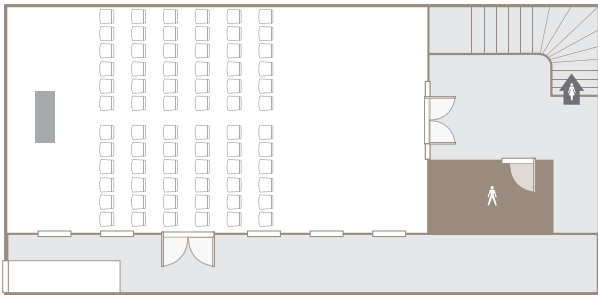
Once inside the main gate, turn right, pass through the barrier and follow car park along to the 'Conference Parking Area'.

✓ FIRE ASSEMBLY POINT

In the unlikely event of a fire, please note the Fire Assembly point for the Butterfield Room is in front of the Library in front of the sundial.



Lecture Theatre 72



Classroom 72

